

ST. PETER'S LUTHERAN CHURCH

310 Route 137  
Harwich, MA 02645-1361

Non-Profit Org.  
U.S. Postage  
PAID  
S. Yarmouth, MA 02664  
Permit No. 34

**Return Service Requested**

**OCTOBER 2022**

# *The Network*

**St. Peter's Lutheran Church  
OCTOBER 2022**

Phone: 508-432-5172  
Fax: 508-432-5125  
Email: [office@StPetersCapeCod.org](mailto:office@StPetersCapeCod.org)  
Website: [www.stpeterslutherancapecod.org](http://www.stpeterslutherancapecod.org)

St. Peter's Lutheran Church



## The Network

### OCTOBER 2022 Issue

#### DEADLINE

For submissions to the  
*November 2022 Issue*  
is **October 15, 2022**

#### Co-Pastors:

**The Rev. Christian G. N. Holleck:**

[pastorchristian@stpeterscapecod.org](mailto:pastorchristian@stpeterscapecod.org)

**The Rev. Tiffany Nicely Holleck:**

[pastortiffany@stpeterscapecod.org](mailto:pastortiffany@stpeterscapecod.org)

#### Minister of Music

**Maggie Ribb:**

[ministerofmusic@stpeterscapecod.org](mailto:ministerofmusic@stpeterscapecod.org)

#### Ministry Administrator

**Joanie Keating:**

[office@stpeterscapecod.org](mailto:office@stpeterscapecod.org)

#### Operations Administrator

**Ann German:**

[businessoffice@stpeterscapecod.org](mailto:businessoffice@stpeterscapecod.org)

#### Custodian

**Rebecca Catron**

#### Nursery Caregiver

Position open - now hiring

#### 2022 Financial Staff:

**Russ Olson, Treasurer**

[churchtreasurer@stpeterscapecod.org](mailto:churchtreasurer@stpeterscapecod.org)

**Suzanne Bassett, Assist. Treasurer**

[assistanttr@stpeterscapecod.org](mailto:assistanttr@stpeterscapecod.org)

**Lois Thomas, Fin. Secretary**

**Lynn Hatch, Assist. Fin. Secretary**

#### 2022 Church Council:

Juliet Bongfeldt

Bill Crocker

Peg Flood, President

Kathy Glifort, Secretary

Judy Langelier

Gary Mann

Marianne O'Boyle

Russ Olson, Treasurer

Cathryn Samples, Vice Pres.

Rodney Schuller



#### ST. PETER'S MISSION STATEMENT

Centered in Christ and empowered by  
God's Spirit, we love, grow and serve.

#### Our core values:

Christ-centered  
Open-minded  
Caring  
Welcoming  
Generous

#### TABLE OF CONTENTS

#### PAGE

What's Happening in October	3
View From the Deck	4-5
Celebrating Life	5
Special Congregation Meeting	6
Stewardship	7
From the Organ Bench	8
ELCA Young Adults in Global Mission	9
Christian Education	10
Prayer Shawl/Esther Circle/	
Sacred Sorrow/	11
PSALM	12
PSALM Tea Party	13
Attic Treasures	14-15
Solar Panels	16
Loaves and Fish Pantry	17
Council Corner	18
Financial Status	18
Notes and Letters	19-20
Announcements	21-22
Through the Lens of Science with Doug	23
Birthdays & Anniversaries	24
Tree of Life	25-26
Memorial Garden	26
October Calendar	27
St. Peter's Friends & Family Prayer List	28



#### Affirmation of Welcome

Welcome to new visitors and old friends.

We are a Reconciling in Christ congregation and strive to welcome people of every age and size, color and culture, every sexual orientation and gender identity, socioeconomic status, marital status, ability and challenge.

Welcome to believers and questioners, and to questioning believers. Welcome to all who seek Christ's love and grace.

This is a place where you are welcome to rejoice and lament, seek healing and offer service. Welcome in the name of Jesus.

Church Phone: 508-432-5172

Church Fax: 508-432-5125

Website:

[www.stpeterslutheranapecod.org](http://www.stpeterslutheranapecod.org)

Office email:

[office@stpeterscapecod.org](mailto:office@stpeterscapecod.org)

# What's Happening In October

## SUNDAY WORSHIP SCHEDULE

9:30 AM  
In-person and live-stream

## OFFICE HOURS

**Mondays**  
10 AM to 2 PM  
**Tuesday - Friday**  
9 AM - 2 PM



**YouTube**

Our 9:30 AM Sunday in-person worship is live streamed on our YouTube channel:

<https://www.youtube.com/c/StPetersLutheranChurchHarwich>

## Centering Prayer

**Tuesdays, October 11 & 25 @ 10:00 am, Sanctuary**

Kathy Carpenter from St. Mary of Magdala will be leading this. All are welcome. Contact Kathy at [kcarpenter43@icloud.com](mailto:kcarpenter43@icloud.com) if you have any questions.

*Be still  
and know  
that I am  
God*  
-PSALM 46:10

## St. Peter's Sojourners

We continue to invite new walkers and ask that they email [Lynn Hatch \(Lchatch1@comcast.net\)](mailto:Lchatch1@comcast.net) if they wish to join the group and get updated info on where our walks will be.

**We will once again meet at the church parking lot for car pooling, at 8:10 am Tuesdays.**

Masks are not required for the walk, but must be worn if breakfast establishments require them. We always plan on going to breakfast after each walk.

For those wishing to know the meeting place for the start of each walk if it's more convenient and closer than the church, directions for the trail head will be sent each week.

The Sojourners walk at different locations on the Cape each week, and we're always open to a new trail we've not tried before; perhaps it might be your favorite.



# View From the Deck



## Searching for Wisdom

### That God Might be Glorified

As I was visiting one of our longest time members, someone now in their nineties, they told me how they had just checked in with another long-time member going through some major life changes, navigating loss and change. This person chuckled and said, "We used to butt heads all the time."

This statement caught me off guard, and impressed me. In this case, "the tie that binds," to use words from a beloved hymn, was stronger than differences in viewpoint. In this case, caring for a brother or sister in Christ long outlived any arguing or voting. Praise the Lord! This comment and the story behind it has helped me reflect upon interrelated goals and values:

- ✚ building and maintaining healthy community
- ✚ searching for wisdom; what is the best or right thing to do
- ✚ glorifying God

I think these can become important questions for prayerful reflection: How will we glorify God? How will we be Christian community? What is the wisest decision?

From what was shared with me over the years, I imagine that when St. Peter's made the decision to add the addition of the downstairs education wing and the bathrooms, there were differing viewpoints about the best ways to use financial resources, about the best ways to balance present needs with a vision for the future, about how we could best glorify God. With hindsight, one can say our downstairs bathrooms not only met certain immediate needs at that time, but poised us for glorifying God in ways not envisioned or imagined—housing homeless people on a rotation basis for over 10 years through the Overnights of Hospitality.

Shortly before Pr. Tiffany and I arrived the church received an unexpected, enormously generous bequest of about one million dollars. Differing viewpoints about how to use this money led to some tensions. Thankfully, eventually, this led to a reduction in the church mortgage, assistance with housing for the then-young Pastors Holleck, and funding for many outreach and benevolence projects. Hopefully God has been glorified through all of these!

In the early church there was enormous disagreement about dietary laws. Jesus was Jewish. Was it essential for his followers, for the early Christian community, to abide by Jewish dietary laws? Was this God's will? There were differing viewpoints even among Jesus's 'twelve apostles.' Everyone's goal was to glorify God. The question was how best to do it. Obviously our decisions have important ramifications; this is especially so when they pertain to whom we welcome, how we worship and how we serve.







These are some of the things on my mind with our approaching congregational meeting about whether to accept the gift of the Southfield pipe organ from St. Paul's Lutheran Church and commit to everything involved in rebuilding it in our space. Clearly this decision does not carry the moral weight or imperative of whom we welcome (becoming a Reconciling in Christ Church or a congregation welcoming of migrants.) Still, I am excited about the ways it could help us glorify God through music and worship. I am excited about the ways it could lead to concert series for the community. I envision shuttle buses bringing people from our Community Centers or Senior Centers (Is anyone thinking Anderson Fund?!). I am excited about continuing and building on our rich Lutheran musical heritage. I am humbled and honored, in some way to continue St. Paul Lutheran Church's 125 year legacy after that congregation closes, realizing that we are all interconnected.

All this, of course is something we need to discern together as a congregation. How will we best glorify God? How will we balance immediate needs with long term vision? Worship and music with outreach and benevolence? Where will the Holy Spirit's wisdom lead us? And might we, years down the road, speaking lovingly of and to one another, "We used to butt heads all the time!"

To God be the glory!

*Pastor Christian*

## **Celebrating Life - Honoring Loved Ones**

Funeral lunches, "collations," are gatherings we offer families to share love and comfort through food and fellowship. Through them we celebrate life, share stories and honor loved ones. Church volunteers makes these collations possible.

There are various ways you can volunteer. They include:

- ✝ Making a plate of baked goods and dropping it off at the church.
- ✝ Transporting food platters from restaurant  
(we have recently ordered food from restaurants in Harwich, Harwich Port, and Orleans; however they do not deliver).
- ✝ Helping with set-up and/or cleanup the day of the collation.

Team leaders are: Karen Beggs, Elaine Davis, Jetty Lampson, Diane Stauss and Jane Wordsworth.

Please contact Jane Wordsworth at 774-994-8318 or [jbwords47@gmail.com](mailto:jbwords47@gmail.com) if you are able to help.



## *Special Congregation Meeting*

Sunday, October 2, 2022

following the 9:30 AM Worship Service

*Click here for more information.*

Dear Members, Associate Members and Friends of St. Peter's,

You are invited to a special Congregation Meeting on Sunday, October 2, 2022 after the 9:30 AM worship service. We will be voting on the following motion:

**The Organ Task Force moves to accept the Southfield Organ Company organ as a donation from St. Paul's Lutheran Church and to fund the necessary monies, up to \$350,000, required to dismantle, transport, rebuild and install the instrument including the expenses to modify our sanctuary. Such modifications may include:**

- Expansion, redesign and reconstruction of the altar space
- Removal of soffits • Reconfiguration of electrical, plumbing, HVAC and AV as needed
- Emergency egress near the front of the sanctuary

**Please make an effort to attend this important meeting in person.**

A Zoom meeting link is available below for those unable to attend in person. Please take some time before the meeting to read and review the letter from the Organ Task Force which provides information about the motion.

Thank you, Peg Flood, Congregation Council President

**To read the full letter from the Organ Task Force go to our website:**

**<https://stpeterslutherancapecod.org/wp-content/uploads/Combined-Cover-and-OTF-Special-Congregational-Meeting-Letter-September-2022-1.pdf>**

**Join Zoom Meeting via computer:** <https://us02web.zoom.us/j/89441007010?pwd=RU8za3VNZ3BheU9EbFNmdVNkMHdYUT09>

**Join Zoom meeting by phone:** +1 929 205 6099 Meeting ID: 894 4100 7010  
Passcode: 061482

# Community

"Day by day, as they spent much time together in the temple, they broke bread at home and ate their food with glad and generous hearts, praising God and having the goodwill of all the people." - Acts 2:46-47

Our stewardship theme this fall is community. The Bible verse above describes the Christian community in the early church. Community can have many meanings. Our understanding of community wraps us like the skin of an onion. In the innermost layers are those to whom we feel closest. Starting from the innermost layer and moving outward, think about who you consider your community.

Your immediate family.  
Your extended family.  
Your closest friends.  
Your childhood pals.  
Your school alumni.

The neighbors around your home.  
The people in the town where you live.  
People who share your hobbies and interests.  
Your co-workers.  
Cape Cod residents. New Englanders. Americans...  
English speakers (or whatever your native language is).  
People with your ethnic roots.  
Lutherans.  
Christians.  
Those who share your core values and beliefs  
wherever they live or whatever their religion.

Immigrants and refugees.  
Those who are starving or sick.  
Those who need your help.  
Those who help you.  
Residents of planet earth.

What are your obligations and responsibilities to your community? It seems like one definition of community is those people you identify with, those people you know will help you when you need it, and those people you know you will help when they need it.

Where does St. Peter's fit into your community in the list above? Do you consider St. Peter's members, friends, and missions to be your close community? How does St. Peter's provide community to you and others? Who are the St. Peter's communities?

This fall let's start a conversation at St. Peter's around community that involves people of all ages so the church stays an active and meaningful part of our lives. You will find links to a few recent articles in Living Lutheran about the yearning for community and relationship, especially in younger people and those made distant by Covid in the past few years.

So how do we relate the topic of community to stewardship? We know people yearn for connection and relationship with other people. Community is how we express these connections and relationships. These relationships get us through difficult times when we are on the receiving end of community. And when we give and help others in our community it gives our life meaning. We feel good when we give back. Stewardship is all about giving and caring for each other and God's creation. The church in general, and St. Peter's in particular, is a deeply connected community of believers. What we receive and give at St. Peter's can only be possible if we all participate by supporting the church with our time, our talents and our money.

In the next few weeks we will ask you to think about community and participate in discussions during Sunday worship about what community means to you. Some articles to read:

- <https://www.livinglutheran.org/2022/03/my-take-they-may-not-come-back/>
- <https://www.livinglutheran.org/2022/06/gen-z-and-the-church/>
- <https://www.livinglutheran.org/2017/12/the-millennial-mystery/>



# "from the Organ Bench"

Rehearsal dates:

**Sanctuary Choir**

Thursdays at 3:00 p.m.

**St. Peter's Handbell Choir**

Thursdays at 4:30 p.m.

**Please consider attending this event:**

## ***Courante***

Baroque Music Ensemble



presents

## ***The World's a Stage***

instrumental music from baroque theater

featuring works by Elisabeth Jacquet de la Guerre, George Frideric Handel, Henry Purcell, Jean-Baptiste Lully, Alessandro Scarlatti and Jean-Philippe Rameau

*Jan Elliott, recorder; David Gable, violin;  
Molly Johnston, viola da gamba; Brittany Lord, harpsichord*

**October 2, 2022 3:00pm**

**St. Peter's Lutheran Church**

**310 Route 137, Harwich, MA**

\$20 suggested donation  
Children free

More information at: 508-237-2278, gambalady@gmail.com, or courantecapecod.com

**Blessings and peace,  
Maggie**







## Young Adults in Global Mission - ELCA

September 9 at 5:35 PM · 🌐

### YAGM IS BACK!

Our 24 AMAZING volunteers deployed this week to Argentina/Uruguay, Jerusalem, Senegal, and the United Kingdom to live in intentional community. **Please keep them, the country coordinators, & the communities receiving in your prayers.**



If you're interested in supporting our very own St. Peter's YAGM volunteer, Joanna Holleck...

Donations can be made online via her fundraising page, which can be found here: [https://support.elca.org/site/TR/Events/General?px=1072616&pg=personal&fr\\_id=1181](https://support.elca.org/site/TR/Events/General?px=1072616&pg=personal&fr_id=1181) (preferred method)

or on the St. Peter's website under the "Give" tab (be sure to select "ELCA Young Adults in Global Mission Program - Joanna Holleck" under the Special Appeals section).

If you'd prefer not to donate online, you can also write a check to St. Peter's Lutheran Church with "Joanna Holleck" as the memo.

### 2022- 23 COUNTRY PROGRAMS



JERUSALEM & THE WEST BANK



ARGENTINA & URUGUAY



SENEGAL



UNITED KINGDOM



**YOUNG ADULTS IN GLOBAL MISSION**



# Christian Education

## The Bible Study for Women

We're continuing our study of the Gospel of John. On the first and (usually) third Wednesday evenings of each month we meet at 7 pm (both in-person and zoom) to read, discuss and learn. Join us and add these dates to your calendar now!



October 5 and 19

November 2 and 9 (note this is the first and second week)

December 7 and 14 (note again that this is the first and second week)

Please contact Pastor Tiffany if you'd like the Zoom link.

Women <sup>of the</sup> ELCA

New England

### Biennial Convention - October 27-29, 2022

at Calumet Lutheran Conference Center ~ Freedom, NH

Yes, Bishop Hazelwood plans to attend.

Scripture will be explored.

Several just fun activities.

Sharing ideas/stories.

Prayer, worship, and joyful singing together!

Contact Pastor Tiffany if interested in attending.



Sunday School is in the building! We are spending the Fall with Jonah and the Lord's Prayer. Art, storytelling, science, games, drama and music - each week is a new style of lesson. Any student from Kindergarten to grade 6 is welcome to join in.

We are going with an every other Sunday schedule, as listed below. Sunday School starts as soon as the students take communion, so about 10:15.

Dates for 2022-2023 (at this time) are:

October 9 and 23, November 6 and 20.

*In December we'll have rehearsals for the Christmas pageant after worship services.*

*Then back to our Sunday School schedule: January 8 and 22, February 5 and 19, March 5 and 19, April 2, 16 and 30 and May 7 and 21.*



The St. Peter's Prayer Shawl Ministry will plan to meet on Monday, October 3rd and Monday, October 17th at 1:30 in the Luther Room.

In September several shawls were given to recipients who, unfortunately, suffered the loss of a family member. Our prayer shawls are always appreciated and there continues to be a need.

Please consider joining us as we prayerfully knit or crochet and enjoy pleasant fellowship. Patterns, yarn, needles and patterns are available if needed and if you require a refresher or are a beginner we would be happy to help.



Happy Fall!

The St. Peter's Esther Circle will resume regular meetings this month. Dates to be determined. The group is looking forward to plans for the year including the Cranberry Fair to be held on the Saturday before Thanksgiving.

We have already begun sorting and pricing jewelry contributions. Any items for the knitting table will be gratefully accepted. Hats, socks, mittens for both children and adults are always popular.

For more information about the Prayer Shawl Ministry or Esther Circle please contact Marianne O'Boyle at 508-775-2757 or [marianne@oboyle.net](mailto:marianne@oboyle.net).



The St. Peter's Ministry for bereaved parents will meet on Thursday, October 20th at 1:30 in the Luther Room. Anyone who has experienced the loss of a child is welcome to join us and it truly helps to be with others who understand.

"The reality is that you will grieve forever. You will not 'get over' the loss of a loved one; you will learn to live with it. You will heal and you will rebuild yourself around the loss you have suffered. You will be whole again but you will never be the same. Nor should you be the same nor would you want to." - Elisabeth Kubler-Ross

If you would like information about our group or if you just need to chat please contact Marianne O'Boyle at 508-775-2757 or [marianne@oboyle.net](mailto:marianne@oboyle.net).

The staff at SPLC  
wishes to thank the  
Esther Circle for inviting  
us to the BBQ.

Everything was  
delicious!!

September 20, 2022





**P.S.A.L.M.**  
**People Sharing and Loving More**



**Please mark your calendar for upcoming PSALM meetings and activities:**

October 13 - Business meeting at 7 pm  
November 10 - Business meeting at 7 pm  
November 19 - *THE CRANBERRY FAIR* at 9 am



**Please join us, all are welcome.**



## **CRANBERRY FAIR 2022**

**SAVE THE DATE: Saturday, NOVEMBER 19th**

We will be offering cookies, pies, specialty foods, lunch to go, gift items, knitted items and of course our popular Jewelry Junction and Attic Treasures. All proceeds benefit homeless and at-risk children right here in our neighborhoods.

As always, we desperately need homemade cookies and pies for the Cranberry Fair. Bakers- Thanks in advance for your help.



## **Covenant to Care Foster Program**

Exciting news!! St. Peter's has been matched with a Covenant to Care Family (A program of the Cape Cod Council of Churches). Stay tuned for details as we learn more about how to provide support to this foster family. Kathy Glifort will be our coordinator.

## **Thank you!**

The PSALM Group received many thank you notes after we hosted the tea on September 15. Some of the notes received came from: Maureen Bland, Rev. Kathleen Carpenter, Kathy Teahan and Mary Jane Bender from SMMC; as well as Joanie Keating, Aline Glifort, Marianne O'Boyle and Pr. Tiffany

We were so pleased with the attendance and the fellowship shared.

Blessings to all,

Elaine Davis

for the PSALM Group

**See the next page for photos of the event.**





P.S.A.L.M.  
People Sharing and Loving More





## Attic Treasures at the Cranberry Fair

We will be having Attic Treasures again this year at the Cranberry Fair on November 19. Did you know that in recent years Attic Treasures have earned more than \$1000 to give to homeless and at risk kids in the local schools?

We could use your help with Attic Treasures to make it successful and more environmentally aware. Please contact Peg Flood (781-752-5312) or Trish Crocker (508-345-6260) if you can volunteer to help before, during or after the fair.

### **Before the Fair:**

Donations can be brought to the church October 15 - November 6.

**See next page for acceptable donations.**

Volunteers needed to help sort and price donations. We try to get a few of us together at several times to do this and it is fun, especially if you like antiques, vintage items, collectibles and flea market finds.

### **During the Fair (November 19):**

Come and buy treasures to take home or give as gifts.

Volunteers are needed as cashiers and to assist customers with purchases.

## **After the Fair:**

After church on November 20, take home a leftover item for free. Volunteers are needed to dispose of leftover items. If you have an hour or 2 we need you to load items in your trunk and take them to your favorite donation center such as dump swap shops, local thrift shops, and charities. Be aware that these organizations have become more discerning in what they will accept so you may have to dispose of the "un-donatable" in your trash, recycle bin, or dump.

## **What donations we accept for the Fair:**

Usable, attractive and salable household goods.  
Children's toys and storybooks.

## **What we cannot accept:**

- No computers, TVs, small appliances, or other electronics.
- No clothing.
- No books (except for children's storybooks).
- No children's equipment such as strollers, cribs or high chairs.
- No large or heavy furniture. No desks.
- Nothing it takes 2 people to carry.
- No lamps that do not work or need rewiring.
- No single dishes, glasses, or silverware. No "advertising" mugs.
- No florist glass vases.
- Nothing broken or soiled.
- Nothing after November 6. Our volunteers need time to sort and price.
- Nothing you would not buy assuming you needed it.

It is a large effort and waste of the earth's resources for you to drive donations to the church that cannot be sold because our weary volunteers will need to sort and drive leftovers to the dump or donation centers after the Fair. Save gas, your time and our volunteers' time by disposing of these items yourself. **See suggestions below.**

## **What to do with items we cannot accept:**

Instead of bringing unsaleable donations to the Fair please consider the following ways to dispose of your items:

- Bring items to your dump swap shop.
- Put recyclable items in your home or dump recycle bin.
- Put non-recyclable items in your trash.
- Local animal shelter or boarding kennel often need clean towels and small blankets.
- See if local florists, flower growers (e.g. Sabatia Flower Farm), or farmers' market flower sellers would like your florist vases, mugs or other glass containers.
- Google "donating books near me" to find organizations that take books. Check with your town library as many take book donations for their book sales.
- Put clothes in the donation bins at your town dump or local thrift store.

**Hope to see you at the Cranberry Fair!**

**Peg Flood**





### **So, What's Up with St. Peter's Solar Panels??**

Funny you should ask! Believe it or not the panels have been up on our roofs and operating since October 2011 - 11 years ago!!

We bought our panels for about \$169,000 so that we would have full benefit from the sale of electricity we generated to Massachusetts' utilities at the quarterly auctions of Solar Renewal Energy Credits (SRECs) for a period of ten years. We did not share that income with anyone - installers, brokers, etc.

In May St. Peter's received a check for \$2,298.24 in payment for the electricity generated by our panels in the fourth quarter of 2021 and sold to Massachusetts utilities. That was our 40th payment and ended St. Peter's participation in those quarterly auctions. Over the 40 auctions (roughly ten years) St. Peter's received \$136,022.40 in SREC income.

Because we are consuming much of the electricity our roofs generate, we do not have to pay much for electricity except in the Dec-Jan timeframe when the sun is lowest. Hence the budget is spared some \$7,000 in utility bills - an additional benefit of about \$75,000 so far. AND we will continue to have essentially no electricity bills on into the future!

A huge THANK YOU to those who helped in those early days through prayers and contributions to get this valuable project off the ground. St. Peter's was/is a leader in the renewable energy market on the Cape and we have been responsible stewards of our environment, greatly reducing our carbon footprint!!

Bill Vaughan







## **Loaves and Fish Pantry**

Our schedule is as follows:

**Monday:** 1:00 - 3:00 pm

**Wednesday:** 2:00 - 4:00 pm

**Thursday:** 11:30-1:30

**Friday:** 10:00 am - 12:00 pm

The new sign for the Loaves and Fishes Food Pantry is definitely helping us meet the needs of more in our community. We have almost tripled our number of monthly visits from our low last February and provided food for over 125 individual family members last month.

Donations from our congregation, the weekly Bridge players and even neighbors has kept our shelves stocked over the long five weeks that we did not have a delivery scheduled due to the Labor Day holiday. Lower Cape Outreach Council has worked hard to make sure that this doesn't happen and we are now on track to have two deliveries a month from the Greater Boston Food Bank even when a delivery falls on a holiday. They have also applied for several grants and are just waiting to get the final approval.

Andy, the Social Worker from LCOC, will be making a visit to the pantry as soon as the first grant is approved. He will informally meet our clients and let them know about services that are available. Our volunteers have been busy signing up clients for new winter coats for the entire family and sneakers for younger children and will soon begin passing out vouchers for the popular Thanksgiving boxes that include the makings for a turkey dinner and many more items.

We are very excited to see the addition of seafood to our supply of protein. The Cape Cod Commercial Fishermen's Alliance has been contributing haddock chowder, scallop pieces and we also have salmon pieces available. We can always use help so let us know if you are available to substitute or help on special days like the Turkey Box delivery.

You can leave a note in the Loaves and Fishes mail box or call Ruth Brenneman at 774-286-9025. We have an amazing team of volunteers but can always use help. Thanks again to our generous members and friends, we know that St. Peter's supports so many wonderful ministries and yet we still have donations coming in each week.

**Thanks for all your help  
meeting the needs of our great community  
here on Cape Cod.**

# Council Corner notes

Highlights of September 2022

† Met 9/20/22

† Audit report by Wayne Anstey

† Pastors gave their monthly update

† Most of meeting was getting updates from Organ Task Force.

† Council approved recommendations from Organ Task Force unanimously and will present at congregation meeting on 10/2/22



## Financial Status - August 31, 2022

	Actual	Budget	Year To Date	Budgeted YTD
Income	\$ 21,501.34	\$21,375.76	\$240,644.43	\$233,653.33
Expense	\$31,569.78	\$32,931.13	\$260,514.03	\$260,938.67
Net Income	(\$10,068.44)	\$11,555.37	(\$19,869.60)	\$(27,285.33)



## Calling All Saints

We would like the names of your loved one's who have died and those who have been born or baptized in this last year. This information will be used for our All Saints Sunday service on November 6.

Send your loved one's name, date of death or date of birth, to the church office by October 20.

There will also be a sheet on the bulletin board to share this information with the church staff.

## NOTES AND LETTERS



To: St. Peter's  
Lutheran Church  
Congregation,

Thanks so much for  
the prayer shawl.  
It will be lovely this  
winter when it's cold!  
Right now it sits on  
the back of my recliner  
and reminds me how  
much you care!  
All the best,  
Norman Cronin

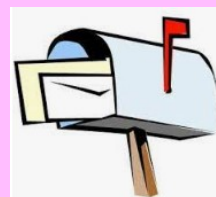
To my St. Peter's Family,

Thank you for your cards, prayers and calls on  
the recent loss of my brother, Bob.

Also, for the beautiful prayer shawl.

Your thoughtfulness was greatly appreciated.

Love and blessings, Joan



We love to hear from you!

Send your updates to...  
[office@stpeterscapecod.org](mailto:office@stpeterscapecod.org)

Or

ST. PETER'S LUTHERAN  
CHURCH  
310 Route 137  
Harwich, MA 02645-1361



WCK sent thank you letter for  
St. Peter's donation of \$500 on 7/20/2022.

WCK is first to the frontlines, providing  
meals in response to humanitarian, climate,  
and community crises. They build resilient  
food systems with locally led solutions.

NOTES AND LETTERS



To my St. Peter's Family,  
I am so extremely thankful for the outpouring of love and support from so many people at St. Peter's. The many cards, kind words, and the beautiful prayer shawl helped me get through the days and weeks following the death of my dear son.

I don't know how people get through difficult times without a church community. I am so grateful for all of you.

Peace and blessings,  
Carol Vrlik

FROM THE ST. PETER'S TECH TEAM

Greetings from the St, Peter's tech team. We met on September 4th and scheduled ourselves to stream the Sunday service through the end of the year. We look forward to continuing to stream the Sunday services live.

As we see the service through the camera's eye, we have two suggestions that might help us remember and include our members and friends participating in the service remotely.

First, when the camera pulls back to show the whole church the focus is on the center aisle and pews 1 through 6 ( working backwards from the front.). If there are empty seats on the center aisle in these pews, please sit there. Sometimes the church will be full of people along the sides and in the back, but these pews are empty so participants at home can 't see the gathered congregation.

The second suggestion we have is that during the passing of the peace, consider standing in the aisle between pews 5 and 6 and look at the black camera on the upper left hand side of the sanctuary as you face the back of the church . Offer a wave or a sign of peace to anyone watching the service.

It is wonderful to be back together for worship and for the most part (fingers crossed) we have worked out the "kinks" in our streaming process. If anyone is interested in joining the tech team please let Pastor Tiffany, or one of us know.

**It is not difficult and it's a lot of fun.**

Come join us!

MJ Pattison, Gary Mann, Gayle Olsen, Lou Meyer





## Seen and Celebrated

Thank you to Bruce Bassett for giving the nursery a second coat of paint, and to Rebecca, Ann and Joanie for clearing out and rebuilding the nursery for that job. It looks great! Ready for business!



**thanks!**



Thank you to the Schaefer-Koteles and the Stendahls for the Keurig machines donated for the upstairs kitchen.

We are now well-caffeinated. We're grateful!



## Calling All Acorns!

If you are out taking a walk and find some acorns, please pick them up and bring them to the church. We are gathering them now for a future art project.

The basket is in the Narthex.

## Nursing Home/Assisted Living worship help needed

One of the ways that we serve our community is by offering worship at two area nursing/assisted living facilities. We take Scripture, prayers, hymns, communion and our presence to people who cannot get to church worship at their home churches. Worship is always best when two or three are gathered.



Would you like to join us for this quiet but important ministry?

We go to The Victorian on the first Wednesday of each month at 11 am and Pleasant Bay Skilled Nursing on the first Thursdays at 2 pm.

Please let the Pastors know if you'd like to join in by being the church out in the world.

## Looking for a winter project?

Do you embroider? We have an unfinished project we would love help on!



Hank Bishop began this project for us while he was still living on Cape Cod.

**Creation Day One:** Light is done.

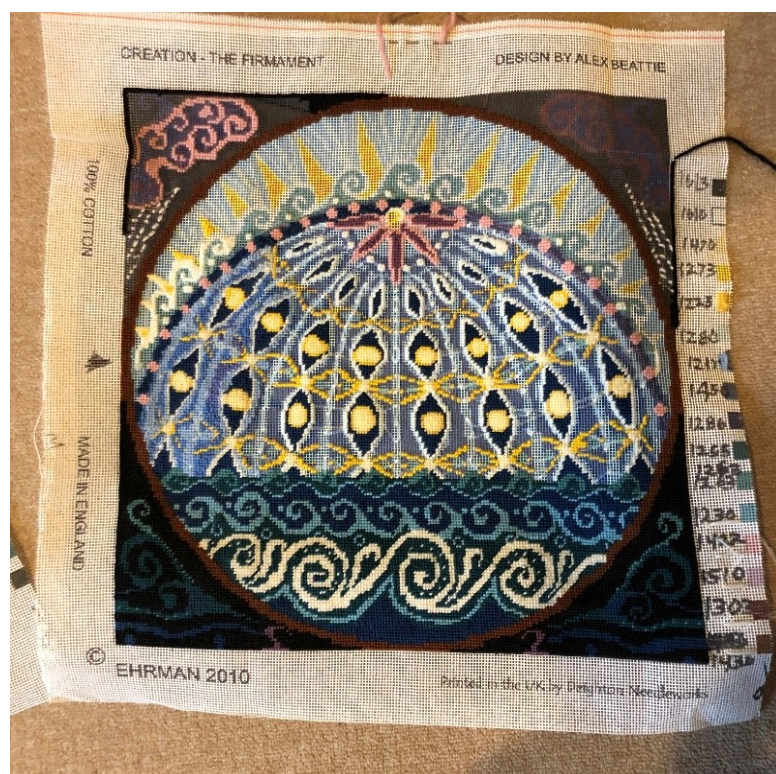
**Creation Day Two:**  
The Firmament is partially done.

We have all the supplies and none of the know-how.

If you can help finish this second piece we'd be grateful.

Talk with Pastor Tiffany for more information or to take a look!

Thanks!





# Through the Lens of Science with Doug...

Doug Kenney is a retired science teacher who lives at Regal Care of Harwich and joyfully shares a monthly newsletter article with us. Call him at 508 430-6309.

October 2022



## The Safety Valves of Hot Springs and Geysers

Geysers and hot springs protect us from volcanoes that could be very harmful. There's a magma chamber under the state of Wyoming just waiting to erupt but numerous geysers such as Old Faithful and Castle Geyser take the pressure off a devastating eruption. Hot springs that bubble up from the ground also act as safety valves. Fly Geyser in Nevada is keeping the ground safe to live on. The devastating volcano of Vesuvius occurred in 79 AD and again in 1631 close to Naples, Italy, but there were no safety valves close by. In 1883 the Krakatoa Volcano in Indonesia caused a tsunami that killed 36,000 people! Mt. Etna in Sicily and Mt. Kilauea in Hawaii are active volcanoes, but to this date, no injuries have been reported. The most active of all is the Stromboli Volcano located on the Lipari Islands just north of Sicily.

Geysers **ventilate** our planet. It takes only one minute for a geyser to recycle when steam falls back to the ground and water reheats to the boiling point. Hot springs and geysers emerge from the ground through natural vents that begin close to magma chambers. These vents are safety valves that take the pressure off a potential eruption. Hopefully more safety valves will emerge close to volcanic activity making our ground safe to live on everywhere.

Tapping geothermal energy from magma may release the pressure of a potential volcano. It would be like having tubes of safety valves drilled into magma chambers like Iceland does to provide energy to metropolitan areas. Our country has been researching such activity in areas where magma is close to the ground such as in Wyoming.

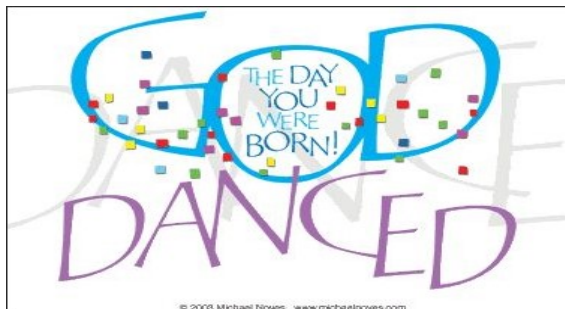
Only time will tell when everyone uses their gifts of intuition bestowed by God.



### A RESPONSE FROM PASTOR CHRISTIAN

I enjoyed reading about the geysers and hot springs that function as 'safety valves,' as well as the efforts to harness geothermal energy from magma. I am reminded of Psalm 46 with its allusions to earthquakes, tsunamis and catastrophic flooding, while asserting that when the most stable becomes unstable (i.e. earth, mountains) God remains stable and is our foundation. I also find myself thinking about volcanoes and safety valves allegorically - do people need safety valves? **Do you have a safety valve?**

## October Birthdays and Anniversaries



Glenn	Ritz	October 1
Nicole	Gordon	October 1
Carolyn	Overton	October 3
Ed	Larson	October 8
Christina	Delp	October 9
Peter	Delp	October 11
Tom	Shields	October 12
John	Candito	October 17
Amy	Peterson	October 19
Kirsten	Glaser	October 23
Tony	Esposito	October 24
Joyce	Oppen	October 24
Melissa	Clayton	October 26
Ginny	Just	October 28
Lois	Thomas	October 29
Ann	Miller	October 31



Christina and Peter	Delp	October 19
Kathy and John	Candito	October 20
Ruth-Anne and Brian	O'Gorman	October 27



*Flowers are placed at  
the altar to the  
glory of God*

If you know someone  
with this special day coming up, please  
let us know.

**Update  
your St. Peter's Directory**

If you have any changes, please send to:  
[office@stpeterscapecod.org](mailto:office@stpeterscapecod.org)







## TREE OF LIFE EDUCATIONAL FUND FALL SERIES 2022 October 16-23

### CITY OF HEBRON: THE PALESTINIAN STRUGGLE FOR HUMAN RIGHTS

The Tree of Life Educational Fund will be presenting a program exploring the severe impact of the Israeli occupation on the economic vitality of the city of Hebron and the challenges of daily life for Palestinians living there. The city of Hebron has roughly 200,000 Palestinian inhabitants, the second largest Palestinian City in the West Bank after East Jerusalem. Approximately 40,000 Palestinians live in the Old City under direct Israeli control with a substantial military presence, surrounded by around 700 Jewish settlers. Another 8,000 settlers live in the settlements of Kiryat, Arba and Giv'at Ha-Avot, on the outskirts of Hebron. For international visitors, including travelers on Tree of Life journeys, Hebron represents some of the most oppressive manifestations of the occupation.

Our speakers will include Melissa, an American woman working for Community (formerly Christian) Peacemaker Teams; Dalia, a young Palestinian woman from Hebron, graduate of Bethlehem University, and speaker at our 2019 program; and Sadeq, a young Palestinian man who is a recent graduate in English Language and Literature from Hebron University.



[Click here for more info: https://tolef.org/2022/08/12/tree-of-life-program-october-2022/](https://tolef.org/2022/08/12/tree-of-life-program-october-2022/)

## TREE OF LIFE EDUCATIONAL FUND FALL SERIES 2022

### October 16-23, continued

Melissa will discuss the work of CPT in Hebron providing a protective presence for school children who are often threatened by the settlers and for Palestinians facing home demolitions or trying to get to the Ibrahimi Mosque for prayer. CPT is also engaged in work with youth to empower them to tell their stories, document the restriction of movement and lack of access to education for children in Hebron, and help to prevent the displacement of hundreds of people in the South Hebron Hills for an Israeli firing zone. She will also describe cultural and business initiatives that are providing employment and support for the people of Hebron.



As residents of Hebron, Dalia and Sadeq will provide insight into Palestinian life there today. They will describe the economic impacts of Israeli actions following the 1994 massacre at the Ibrahimi Mosque and the consequent description of the Old Town as the "Ghost Town." Efforts to revive the Old Town through assistance from a variety of organizations will also be touched on. One of the most important local initiatives that Dalia and Sadeq are involved with and that Tree of Life helps support, is the Hebron Soup Kitchen, which provides free food to the poor. They will reflect on the importance of this service to the community.

We will be offering Palestinian olive oil, food products, and crafts for sale. Crafts will be provided by the Olive Branch Fair Trade shop on Martha's Vineyard.

For further information, please contact:  
Elaine Brouillard, [elaine@toleef.org](mailto:elaine@toleef.org), (508) 737-0662

St. Peter's JustPeace Team, in a concern for human rights and a just-peace in the Holy Land, has expressed openness to hearing the stories of people living in Hebron and invited the Tree of Life to present this workshop.

**The Cape Cod program will be held at  
St. Peter's on Sunday, October 16<sup>th</sup>, from 2-4 pm,**



### Memorial Garden

If you would like to help in the maintenance of the Memorial Garden, consider joining us. New members always welcome! We communicate mostly via email, with limited face to face meetings only if needed. Just send me an email and I will add you to our committee.

Commemorative Bricks - Commemorative bricks are always available! With the holidays coming up, it makes a lovely gift to honor the memory of a loved one, create your own sentiment, or be acknowledged as a contributor with your name(s). Now would be a perfect time to order. Inscriptions are up to two lines of 20 letters each (including spaces.) Note that no special symbols are allowed. Cost is \$55 per brick.

Order forms available in the Narthex or from office staff.  
Questions/thoughts? Contact Lynn Hatch email [Lchatch1@comcast.net](mailto:Lchatch1@comcast.net)  
or cell phone 732-236-8114

St. Peter's Web Calendar

Today ▶ ▶ ▶ October 2022 ▼

This calendar is updated regularly and posted on our website.  
[Click here for the most up to date version.](#)

Print Week Month Agenda ▼

Sun	Mon	Tue	Wed	Thu	Fri	Sat	Oct 1
9:30am Worship in Sanctuary 10:15am Sunday School	25 9am Flora's Bridge Group 10am Susanna Stephen Board 10am Susanna Stephen Board 1pm Loaves and Fish Pantry 6:30pm Chatham Chorale Chai	26 8:10am St. Peter's Sojourners 9am Worship Staff meeting 10am Centering Prayer in San 11am Staff Meeting 12:30pm Flora's Bridge Group <b>+2 more</b>	27 10am Art Studio clean out 11:30am Bridge group 1pm Organ workshop 2pm Loaves and Fish Pantry 3pm Safe Harbors meeting <b>+2 more</b>	28 11:30am Loaves & Fish Food P 12pm Lunch, devotion and fell 3pm Choir rehearsal 4:30pm Bell Choir rehearsal 6:30pm Chatham Chorale	29 10am Loaves and Fish Pantry 12pm Flora's Bridge Group	30 2pm SMMC Set up and Rehseal 4pm SMMC Worship	
9:30am Worship in Sanctuary 10:30am Special Congregation 1pm Sanctuary set up for con 4pm Courante baroque music	2 9am Flora's Bridge Group 1pm Loaves and Fish Pantry 1:30pm Prayer Shawl Ministry 12:30pm Chatham Chorale Chai	3 8:10am St. Peter's Sojourners 9:30am Worship Staff meeting 11am Staff Meeting 12:30pm Flora's Bridge Group 2pm Broad Reach Grief Group	4 11am Worship @ The Victoria 11:30am Bridge group 2pm Loaves and Fish Pantry 3:15pm Confirmation Class - J 7pm Bible Study for Women	5 10am Staff Support Meeting 11:30am Loaves & Fish Food P 2pm Pleasant Bay Worship 3pm Choir rehearsal 4:30pm Bell Choir rehearsal <b>* +3 more</b>	6 10am Loaves and Fish Pantry 12pm Flora's Bridge Group	7 2pm SMMC Set up and Rehseal 4pm SMMC Worship	8
9:30am Worship in Sanctuary 10:15am Sunday School	9 <b>Columbus Day</b> <b>Indigenous Peoples' Day</b> 9am Flora's Bridge Group 1pm Loaves and Fish Pantry	10 8:10am St. Peter's Sojourners 9:30am Worship Staff meeting 10am Centering Prayer in San 11am Staff Meeting 12:30pm Flora's Bridge Group <b>* +3 more</b>	11 11:30am Bridge group 2pm Loaves and Fish Pantry 3:15pm Confirmation Class - J 4pm Y.O.H Board Meeting 7pm Girl Scout Svce Unit-Mar	12 11:30am Loaves & Fish Food P 3pm Choir rehearsal 4:30pm Bell Choir rehearsal 6pm Girl Scouts in Fellowship 6:30pm Chatham Chorale	13 10am Loaves and Fish Pantry 12pm Flora's Bridge Group	14 2pm SMMC Set up and Rehseal 4pm SMMC Worship	15
9:30am Worship in Sanctuary 1pm Tree of Life Hebron Eveni	16 9am Flora's Bridge Group 1pm Loaves and Fish Pantry 1:30pm Prayer Shawl Ministry 4:30pm SPLC @ Faith Family K 6:30pm Chatham Chorale Chai	17 8:10am St. Peter's Sojourners 9:30am Worship Staff meeting 11am Staff Meeting 12:30pm Flora's Bridge Group 6pm Council meeting	18 11:30am Bridge group 2pm Loaves and Fish Pantry 3:15pm Confirmation Class - J 7pm Bible Study for Women	19 11:30am Loaves & Fish Food P 1:30pm Sacred Sorrow - Luthe 3pm Choir rehearsal 4:30pm Bell Choir rehearsal 6pm Girl Scouts in Fellowship 6:30pm Chatham Chorale	20 10am Loaves and Fish Pantry 12pm Flora's Bridge Group	21 2pm SMMC Set up and Rehseal 4pm SMMC Worship	22
9:30am Worship in Sanctuary 10:15am Sunday School	23 9am Flora's Bridge Group 1pm Loaves and Fish Pantry 6:30pm Chatham Chorale Chai	24 8:10am St. Peter's Sojourners 9:30am Worship Staff meeting 10am Centering Prayer in San 11am Staff Meeting 12:30pm Flora's Bridge Group 2pm Broad Reach Grief Group	25 11:30am Bridge group 2pm Loaves and Fish Pantry 3:15pm Confirmation Class - J 7pm Bible Study for Women	26 10am Pastoral Care Team mee 11:30am Loaves & Fish Food P 3pm Choir rehearsal 4:30pm Bell Choir rehearsal 6pm Girl Scouts in Fellowship 6:30pm Chatham Chorale	27 10am Loaves and Fish Pantry 12pm Flora's Bridge Group	28 2pm SMMC Set up and Rehseal 4pm SMMC Worship	29
9:30am Worship in Sanctuary	30 <b>Halloween</b>	31 <b>First Day of American Indian</b> Nov 1	2 11am Worship @ The Victoria 11:30am Bridge group 2pm Loaves and Fish Pantry 3:15pm Confirmation Class - J 7pm Bible Study for Women <b>+4 more</b>	3 10am Staff Support Meeting 10:30am Harwich Women's Clu 11:30am Loaves & Fish Food P 2pm Pleasant Bay Worship 3pm Choir rehearsal <b>+4 more</b>	4 10am Loaves and Fish Pantry 12pm Flora's Bridge Group	5 2pm SMMC Set up and Rehseal 4pm SMMC Worship	

\* Tuesday 10/11

12:30pm Esther Circle in Luther Room  
2pm Broad Reach Grief Group-Luther Ro  
5:30pm Council Officers

\* Thursday 10/6

6pm Girl Scouts in Fellowship Hall (Merid  
6:30pm Chatham Chorale  
6:30pm NAMI Meeting